



6D Laskin-Nozzle Aerosol Generator



The 6D is a small, light, and rugged portable, self-contained Laskin-Nozzle aerosol generator. It is ideal for testing a wide variety of filter systems with airflows up to 2,000 cfm by generating a poly-dispersed, sub-micron aerosol. Applications include workstations, negative- pressure filtration units, biological safety cabinets, ceiling modules and more. It can also be used for testing positive pressure systems using an optional hose adapter. On-site routine maintenance is easy. And its integrated compressor makes implementation simple - all you need is a power source.



6D LASKIN-NOZZLE AEROSOL GENERATOR

A tough, portable solution

The 6D is a small, light, and rugged portable, self-contained Laskin-Nozzle aerosol generator. It is ideal for testing a wide variety of filter systems with airflows up to 2,000 cfm by generating a poly-dispersed, sub-micron aerosol. Applications include workstations, negative-pressure filtration units, biological safety cabinets, ceiling modules, and more.

The 6D can also be used for testing positive pressure systems using an optional hose adaptor. On-site routine maintenance is easy. And its integrated compressor makes implementation simple - all you need is a power source.



Hose Adaptor Connectors

Performance Guaranteed

6D aerosol output is regulated with a standard issue calibrated pressure gauge; guaranteeing 20psi across the nozzle as specified in industry standards. The 6D complies with all applicable electrical and safety requirements and is supplied standard with the CE mark.



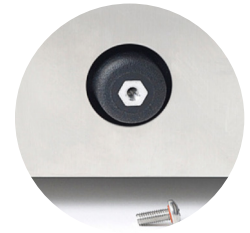
Site Glass



Power Cord Storage

Easy to use

Integrated liquid fill sight glass, drain port, and power cord storage make operating, transporting, and storing the 6D simple and easy. Power Cord Storage Optional Hose Adaptor Kit A hose adaptor kit, used to introduce aerosol remotely, connects easily to the standard outlet using the sanitary flange or simple NPT connection.



Drain Port

PRODUCT SPECIFICATIONS

Aerosol Output Range	50 - 2,000 cfm
Aerosol Concentration	100 ug/l @ 200 cfm / 10 ug/l @ 2,000 cfm
Generator Type	2 or 6 Laskin Nozzle Jets (1/2 or 1-1/2 Nozzles)
Aerosol Type	Polydisperse (Cold)
Size	14-1/2" L x 10" W x 9" H (37cm L x 26cm W x 23cm H)
Weight	34lbs (15kg)
Electrical	110VAC/60 Hz or 220VAC/50Hz
Compressed Air	Not Required, On-Board, Integral Compressor

Service & Training @ ATI

- OEM calibration, maintenance & repair
- ATI Certified Operational, Service & Maintenance Training (ask for details)
- Quality testing for HEPA filters & protective masks available at our ISO-9001 registered, NQA-1 & DOE audited Test Laboratory