

# LMSPharma 8.2

## L I G H T H O U S E   M O N I T O R I N G   S Y S T E M



**T**HE LMS Pharma Lighthouse Monitoring System is designed to collect, analyze, and display data for all phases of pharmaceutical operations. Its advanced design provides sophisticated automated alarming, notification, viewing, reporting, and auditing capabilities.

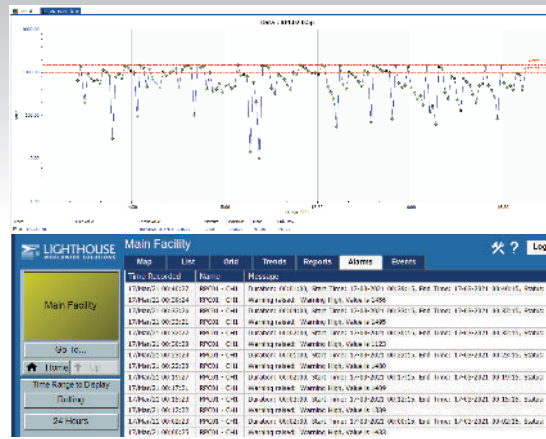
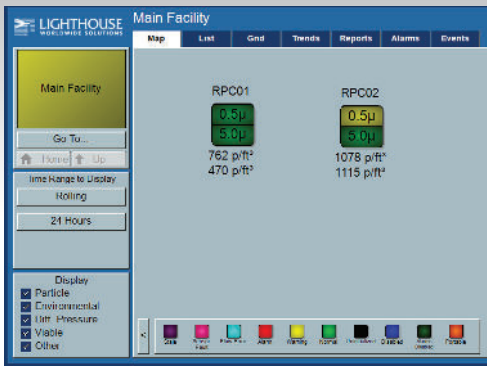
LMS Pharma provides highly reliable and secure facility monitoring with system redundancy and robust security. The easy-to-use interface allows for customized viewing of real-time and historical data via maps, trend charts, data tables, and fully customizable Conformance reports, while also giving exceptionally fast visual notification of problems so that monitoring tasks and alarm acknowledgements can be accomplished quickly and easily.

Redundant data acquisition systems take over control seamlessly should the primary fail. This "failover" feature provides uninterrupted operation and reliable data collection even in the most critical situations.

Support for a wide range of industry standard platforms and protocols enables seamless integration with existing equipment, control systems, and IT environments, all while maintaining 21 CFR Part 11, EU GMP, and GAMP 5 compliance.

### LMS Pharma Monitoring Software

- Real-time and historical data collection
- Simple Differential/Summation/Normalized
- Real-time maps, graphs, data tables, data status
- Alarm outputs to light beacons
- Alarm-logging, acknowledgement, and delays
- 21 CFR, EU GMP, and GAMP 5 compliant
- Output Real-Time data via OPC DA server
- OPC UA Server/Client
- LDAP Directory Services Authentication / Active Directory Groups
- Easy to Use User Interface
- Direct-action Real Time Data Views
- Virtual Machine Installation Option
- Email and SMS Alarm Notifications
- Customizable Automatic Report Exports
- Comprehensive Backup and Failover
- Optional Networked Webclient Access
- Buffering of Environmental sensors



The multi-level Maps provide an overview for the whole facility at once, with highly customizable Unit objects that allow a 1 click "drill-down" to view details. All items on the Map are active, providing access to data viewing, analysis, and alarm management.

Instrument data is easily viewable and graphable, with all data recorded able to be output into standard reports.



Temperature



O<sub>2</sub> levels



Real-time particle counting



Relative humidity



CO<sub>2</sub> levels



Vacuum Pressure



Differential pressure



Viable samplers



Door status

## TECHNICAL DATASHEET

### LMS Pharma Lighthouse Monitoring System

#### Feature List

- Data Collection
- Graphs
- Data Tables
- Data Status
- Maps
- Alarm Output
- Alarm Logging
- Output Real-Time Data
- Virtual Machine Distribution
- Integrated Industry Standards
- Scheduled Reports
- Selectable Cleanroom Status
- Dynamic Alarm Limits
- Automatic Controls

#### LMS Pharma

- Real-time data collection
- Real-time and historical display of graphs
- Real-time and historical display of data tables
- Real-time display of data status
- Real-time display of maps
- Through digital outputs to alarm light beacons
- Alarm acknowledgement and alarm log via Modbus or POC DA or UA server
- Integrates into existing VM architectures
- OPC DA, OPC HDA, OPC A&E, OPC UA, ODBC SQL, Modbus, Simatic S7 and others
- Automatic generation, highly customizable
- On-Screen controls can change cleanroom status
- Configurable to react to multiple inputs
- Pump activations and cycling, cleanroom status changes

#### Optional Accessory

Printed Operating Manual

Distributed By:



Lighthouse Worldwide Solutions reserves the right to change specifications without notice.

www.golighthouse.com  
info@golighthouse.com

1-800 945 5905 (Tollfree)  
1-541 770 5905 (Outside of USA)

